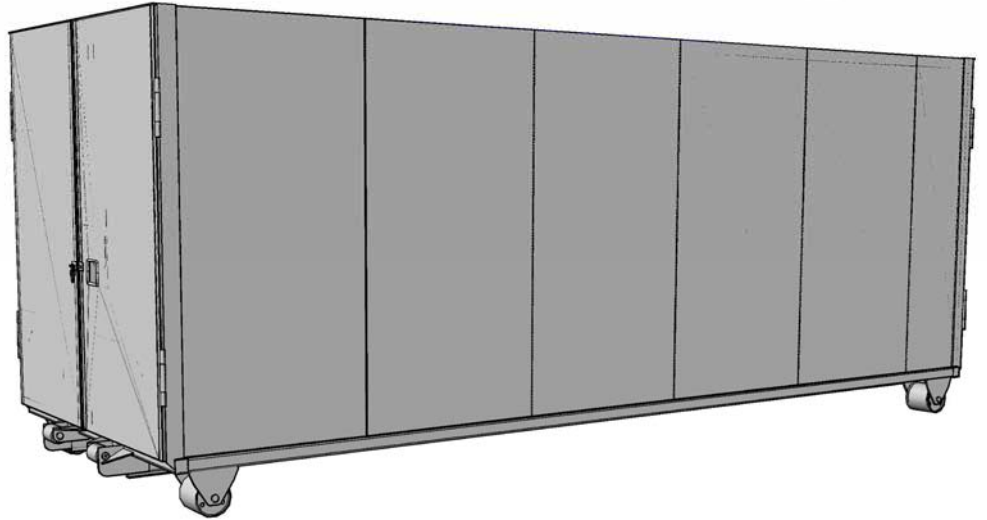
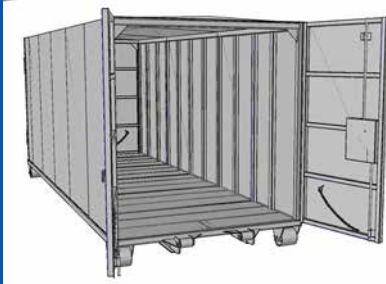


## Smooth-Style Roll-Off Storage Container

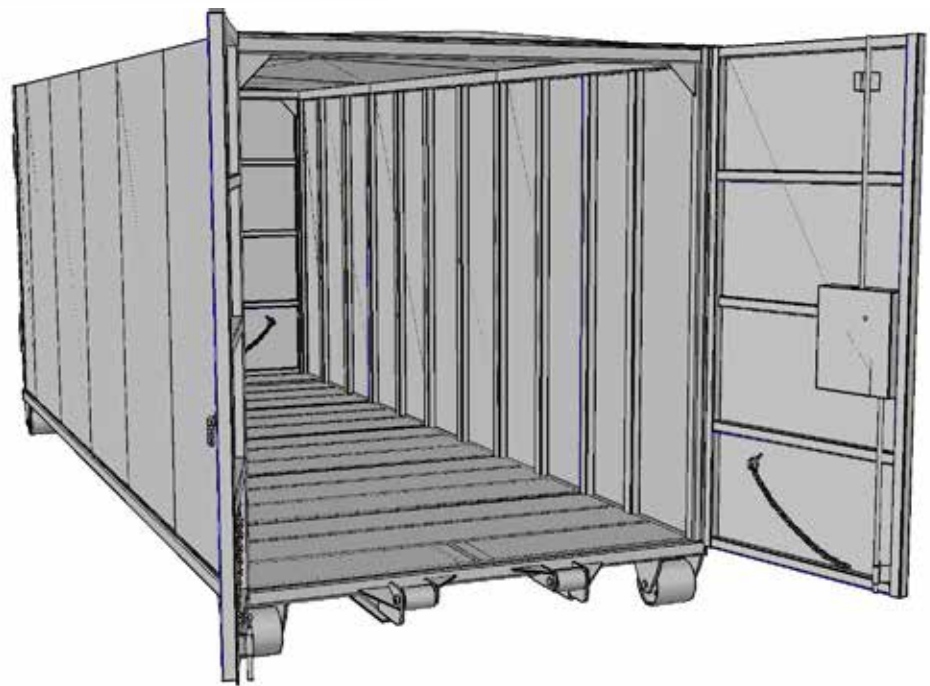
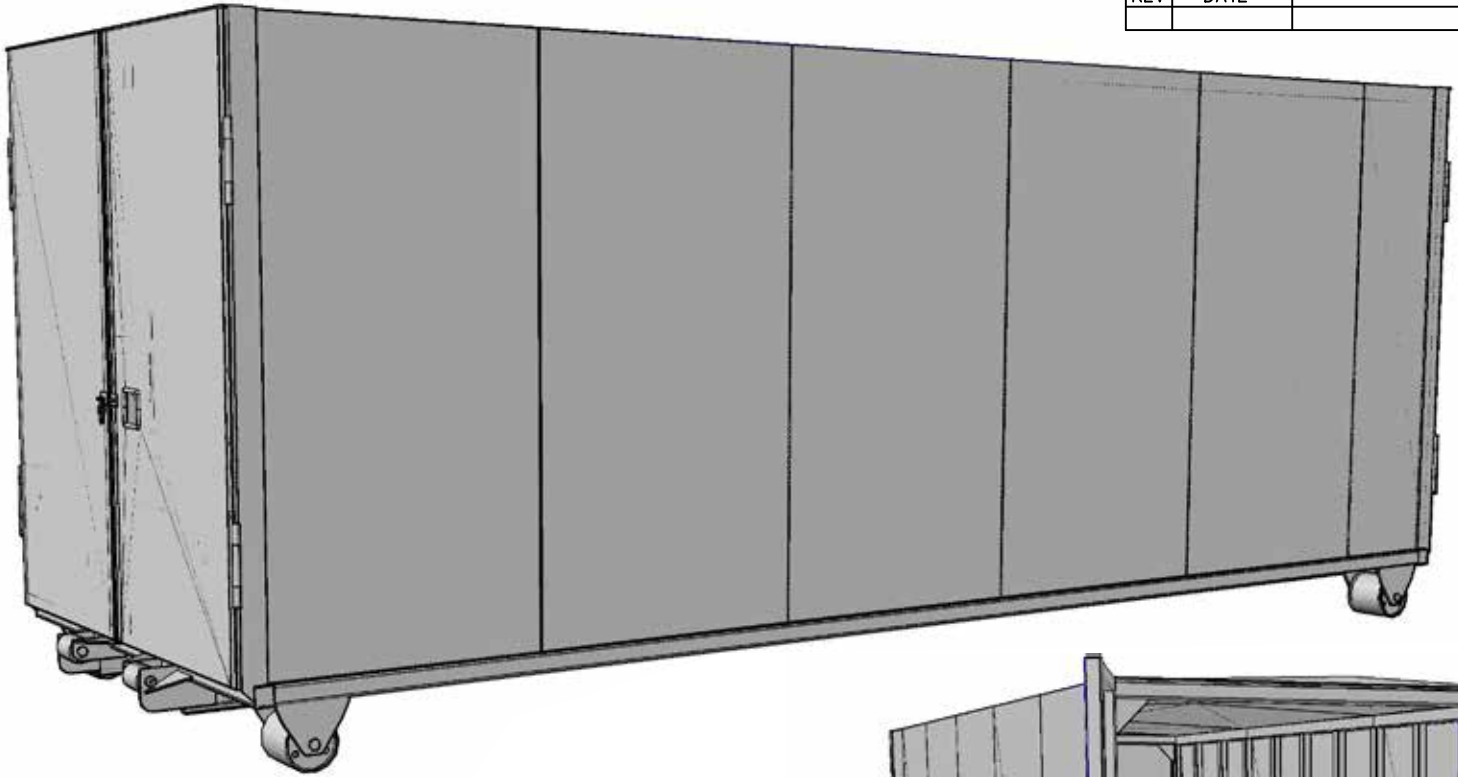


### CLEAN, SMOOTH STYLING

#### Standard Specifications

- All steel construction, 14 GA sides and roof, 12 GA floor.
- Smooth skin outside, post inside at 33" centerlines.
- Low maintenance.
- Two standard sizes - 26'x 8' high and 22'x 7' high.
- Double end hook-up, 4"x 6" nose rollers with grease fittings and 1 1/2" axles.
- Double security doors at each end, with day lock.
- Choice of three standard roof styles – flat, 2" peaked or 6" peaked.
- 6" Structural channel main rails.
- Cross members at 16" centerlines.
- 10"x 8" Stationary steel wheels with grease fittings.
- Various rack assemblies available.
- Interior alkyd primer and white alkyd enamel paint.
- Exterior alkyd primer and painted your choice of standard alkyd enamel paint. Some colors may be extra.
- Bottom coated with automotive underseal.

REV	DATE	DESCRIPTION	INT



NOTES:  
 1) ALL DIMENSIONS ARE IN INCHES, +/- 1/4", UNLESS OTHERWISE SPECIFIED ON THE DRAWING.  
 2) PLEASE REVIEW DRAWING(S), MAKE ANY CHANGES OR MODIFICATIONS THAT ARE APPROPRIATE, SIGN AND RETURN.

CUSTOMER SIGNATURE REQUIRED TO PROCEED



**CONFIDENTIAL PROPERTY OF CFC**

THIS DRAWING AND ALL OF THE INFORMATION CONTAINED HEREIN IS THE SOLE PROPERTY OF CONSOLIDATED FABRICATORS CORP. AND IS ONLY TO BE VIEWED, COPIED, SHARED OR TRANSMITTED BY AUTHORIZED PARTIES.



TITLE: 22'x8'x8' SMOOTH SIDED STORAGE BODY			
DRAWN BY: F. DUTRA	DATE: 05-15-13	SCALE: N.T.S.	CUSTOMER: PROSPECTIVE CUSTOMER
(800)635-8335 TOLL FREE		www.con-fab.com	PAGE: 1 OF 1
			FILE NAME: ENG\CFC\BLACK&GREY WEBSITE DRAWINGS