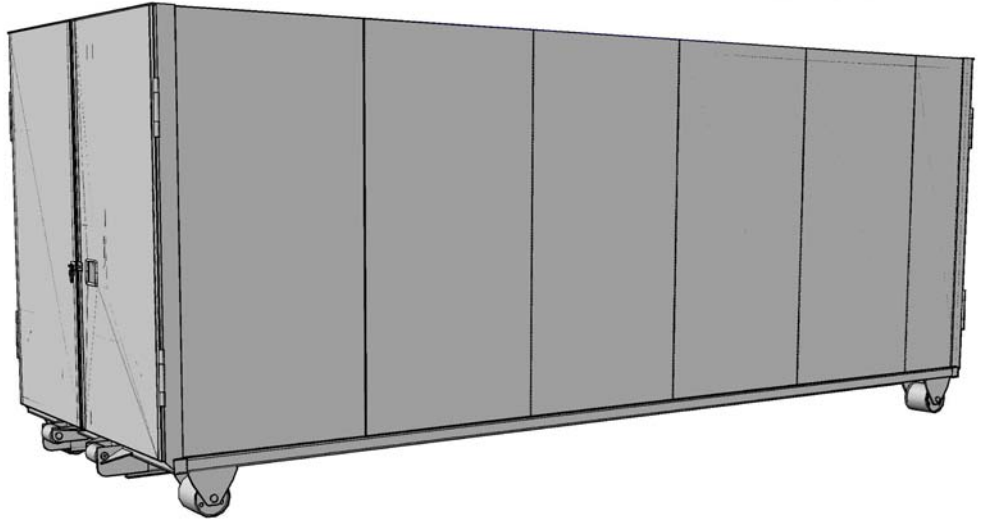
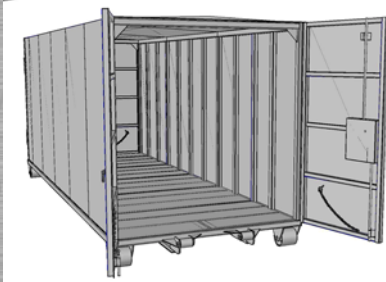


Smooth-Style Roll-Off Storage Container



CLEAN, SMOOTH STYLING

Standard Specifications

- All steel construction, 14 GA sides and roof, 12 GA floor.
- Smooth skin outside, post inside at 33" centerlines.
- Low maintenance.
- Two standard sizes - 26'x 8' high and 22'x 7' high.
- Double end hook-up, 4"x 6" nose rollers with grease fittings and 1 1/2" axles.
- Double security doors at each end, with day lock.
- Choice of three standard roof styles – flat, 2" peaked or 6" peaked.
- 6" Structural channel main rails.
- Cross members at 16" centerlines.
- 10"x 8" Stationary steel wheels with grease fittings.
- Various rack assemblies available.
- Interior alkyd primer and white alkyd enamel paint.
- Exterior alkyd primer and painted your choice of standard alkyd enamel paint. Some colors may be extra.
- Bottom coated with automotive underseal.